

A panoramic view of the Chicago skyline from a waterfront perspective. The Willis Tower is the most prominent building on the left. The foreground shows a marina with many sailboats and a line of trees along the shore. The sky is clear and blue.

NORTHERN INDIANA COMMUTER TRANSPORTATION DISTRICT d/b/a South Shore Line

A STRATEGIC VISION 2024

PRESERVE THE SERVICE: 1977-1990

- NICTD created in 1977 by state statute IC 8-5-15-1
- **Purpose: Save the South Shore passenger service from abandonment**
- Recapitalized rolling stock, other fixed assets and subsidized losses of private rail service owner/operator.
- Purchased the passenger service and underlying assets in bankruptcy in 1990 from Anacostia & Pacific. Resulted in two entities:
 - South Shore passenger service owned by NICTD
 - SouthShore Freight Service owned by A & P.



South Shore Service Goals

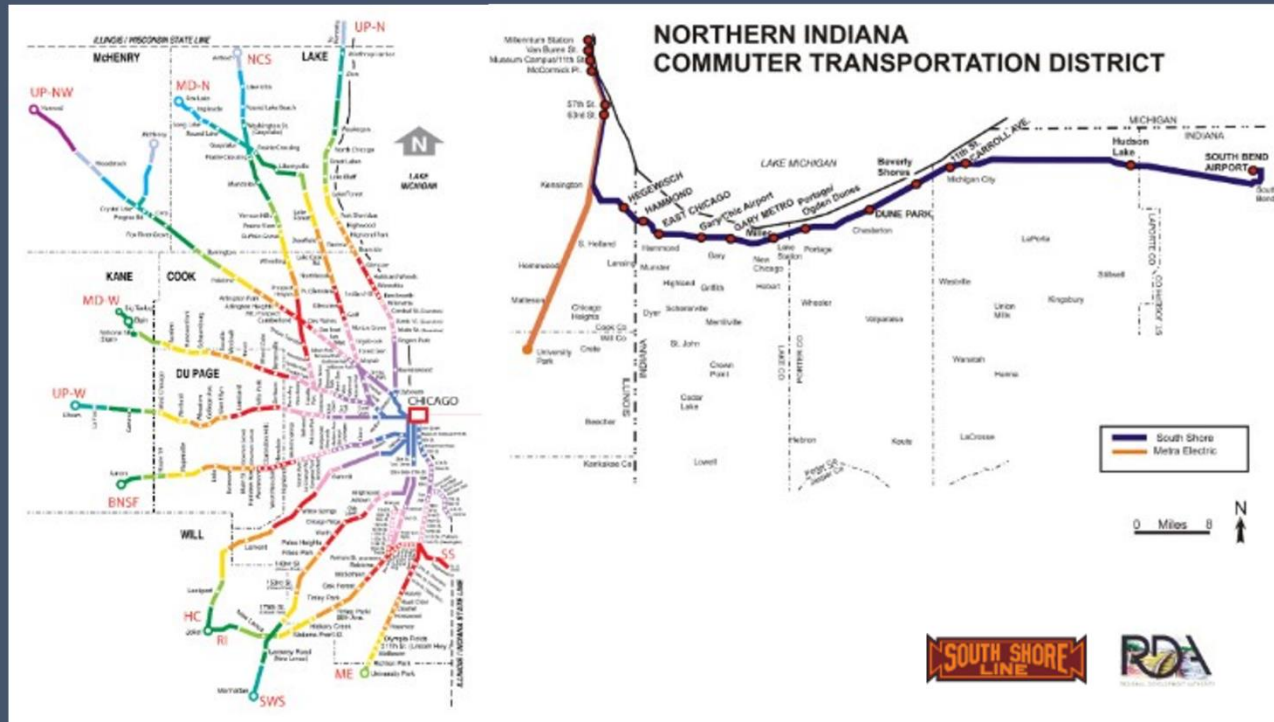
- **Increase Service Frequency with:**
 - more express/limited stop service
 - hourly off-peak service
- **Reduce Travel Times: 90 minutes from South Bend, 67 minutes from Michigan City, 52 minutes from Chesterton, low mid-40s from Miller....**
- **Improve Reliability: From 89% on-time to 95%**
- Increase ridership: **Double 2019 ridership levels-** Chicago has the most congested highway system in the United States- 2nd most in the World.... **there is opportunity to attract riders** to SSL, even in this post Covid, work at home, environment!

Capital Plan: 2024-2028

- Enhance Safety
- Reduce Travel Time
- Increase Train Frequency
- Improve Service Reliability
- *Double 2019 ridership by 2037*

MAJOR CAPITAL INVESTMENTS- 5 Year Capital Plan	
Metra Track 4 Project	\$200,000,000
West Lake Corridor Project	\$943,000,000
Double Track Gary to Michigan City	\$650,000,000
South Bend Airport Rail Realignment	\$100,000,000
State of Good Repair with New Bi-Partisan Infrastructure Funding	\$150,000,000
Metra HL1 Rolling Stock Lease of 26 bi-level cars starting in 2023 (this is part of the \$150M SGOR funding) Fleet incr. to 108	\$17,500,000
Total Capital Plan Spending over next 5 years	\$2.043B

Indiana's Reasons to Invest in Rail Projects



ECONOMIC IMPACT

Exporting Labor & Importing Wages

- Chicago is the **3rd largest regional economy** in US
- On average **Chicago area jobs pay 39%** more than similar jobs in northern Indiana. NWI higher in manufacturing, mining & construction*.
- Access to Chicago doubles the **job base** of Lake & Porter counties: **513,000 vs. 244,600****
- Average annual household income of **\$88,000** for a South Shore commuter equates to approximately **\$369M**.



**Policy Analytics update of 2006 report on Economic and Demographic Trends relevant to the West Lake Corridor Expansion: Bureau of Labor Statistics, 2012 Cook County vs. NW Indiana*

***STATS Indiana and Illinois Department of Employment Security, "Where Workers Work"*



Double Tracking: Gary - Michigan City



Cost: \$650 million

26 mile project area

16 miles new 2nd track

4 new bridges

**5 new hi-level boarding
platforms**

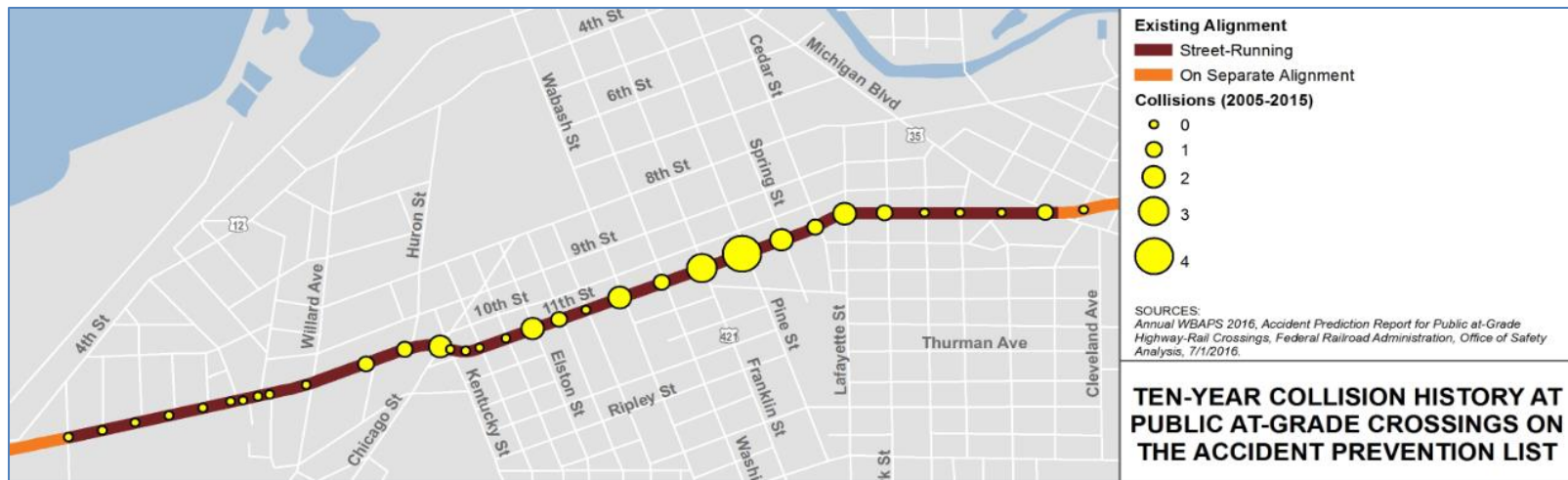
7 new hi-speed X-overs

**Closing 20 grade X-ings in
Michigan City**

**Train/Car separation in
Michigan City**

Revenue Service 5/24

- High Accident Grade Xings in Michigan City



Michigan City Street Improvements



- Follows Preferred Alternative route from 2013 Study
- Remove existing tracks
- Two new tracks s/o 10th St. from Sheridan Ave. to Chicago St.
- Two new tracks along 11th Street, one way traffic eastbound
- Two-way traffic on 10th St.
- Closes 20 crossings
- 13 remaining crossings w/ gates, lights, bells, median barriers
- Quiet Zone application in final approval process



Two new hi-level platforms in Michigan City



11th Street Station



Amtrak Diamond



10th Street- brand new ROW off Street



2nd Track & low-level platform at Beverly Shores Fl. Stop



Cleveland Cliffs Entrance



Construction of new bridge for 2nd track over NS tracks



Bridge over Norfolk Southern



Portage/Ogden Dunes Hi-Level Platform & Parking Lot



Bridge Install Over CSX



Bridge over CSX



Old Hobart Road- Gary Indiana



New Miller Station, Gary



Miller Station – Gary





57 0101

DOUBLE
TRACK
N·W·I

BETTER THAN EVER

MAY 13, 2024

SOUTH SHORE
LINE

<https://youtu.be/sEmtBHPA3gQ>

Metra Leased Vehicle Rehabilitation



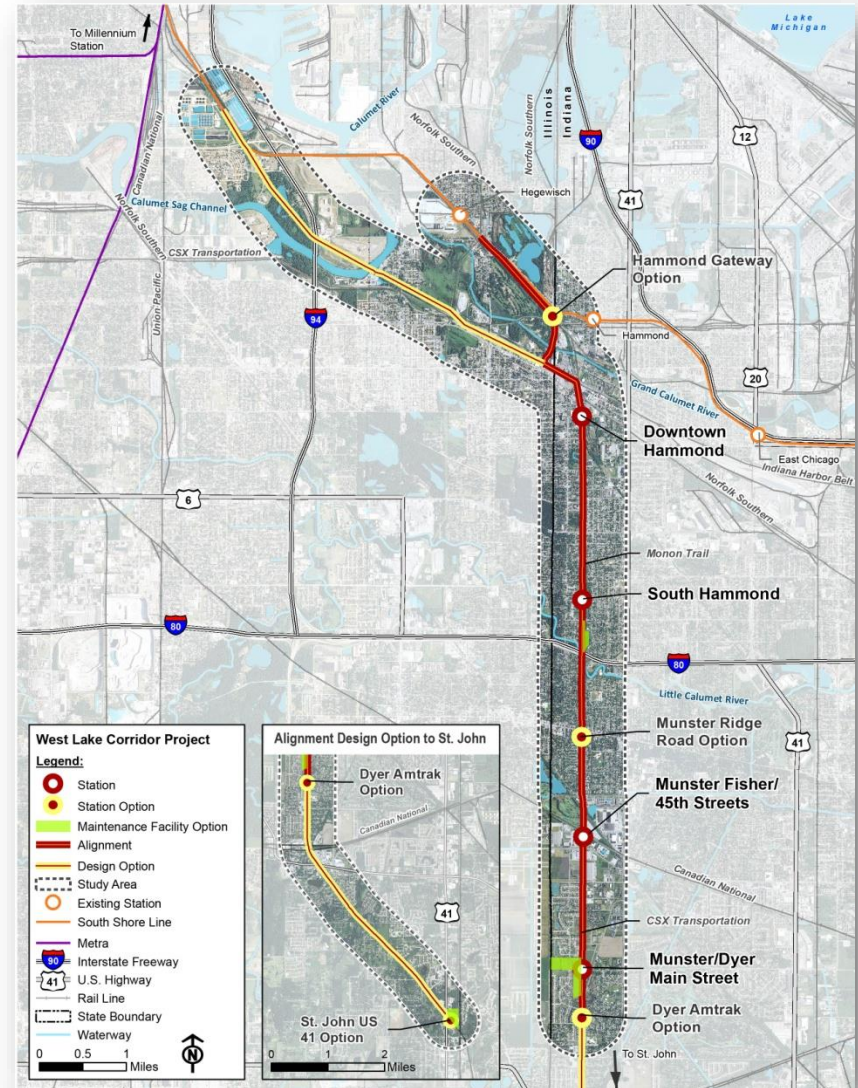
Cars 1204 and 1215 in progress

**NICTD style windows installed,
included combined
ingress/egress window**



WEST LAKE CORRIDOR PROJECT

- 8 mile extension to Dyer, Indiana
- First extension of commuter rail in NW Indiana in over a century.
- \$943 million project cost
- Project Fully Funded with FFGA in October 2020
- NTP issued to FH Paschen/Ragnar Bensen for Design Build construction on 10/29/20.
- Revenue Service “Summer” 2025



Gateway Station- SSL Platforms and WL Elevated Platform



Bridge over CSX



View Looking West of Current SSL, relocated SSL, WL Corridor and Gateway Station



Bridge over the Grand Calumet River



West Lake Corridor Looking South from N. Hammond



Bridge over Little Calumet River- I 94



Bridge over CN – CSX to the West in Munster



Munster Ridge Road Station



Pedestrian Underpass Construction at Munster/Dyer Station

























Construction Photos: Vehicle Rehabilitation



New trash container and recessed hand sanitizer pre-installed in wall



Car #8 (NICTD 7) Interior, 8/2022



Car #8 (NICTD 7) Exterior, 8/2022



Seats installed



Car #9 (NICTD 9) Interior, 9/2022







South Bend Realignment





Benefits of Moving to West Side of SBN

...Save **13-15** minutes travel time to/from Chicago

...Achieves long-term goal of **90 minute** trip to/from Chicago

...**Improve safety** by eliminating 14 grade crossings

...\$5M contract for NEPA/ 100% Engineering underway

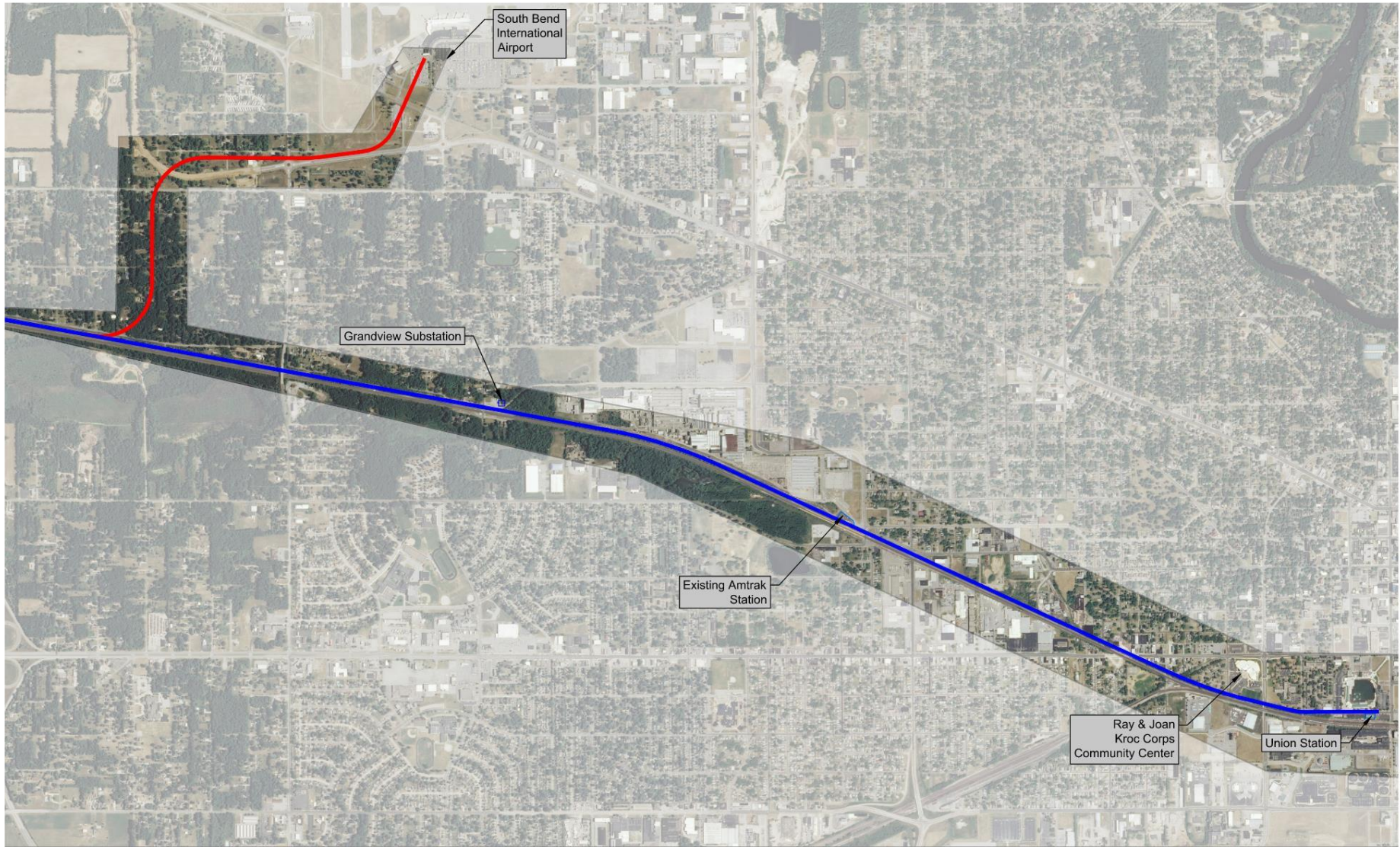
Possible 30-minute **airport shuttle** service from MC to SBN

Ridership estimates: Quadruple current SB to Chicago

Once in a lifetime Federal **Funding from BIL available NOW!**

Strategic Plan Update:Downtown SB Station

- **In addition** to the realignment of access to the airport, NICTD foresees the future opportunity to extend the South Shore Line into the downtown area of South Bend. Through the process of exploring the relocation possibilities in South Bend many options were proposed to the City. The direct rail connection to the airport continues to offer intermodal transportation benefits, but there is potential to extend the rail line and continue service into the downtown area. While a specific location has yet to be identified, a downtown station would offer the City of South Bend the potential transit-oriented development benefits seen by other communities from the expansion of NICTD's existing rail line as a result of the Double Track NWI Rail Project, as well as the new route construction of the West Lake Corridor Rail Project in Lake County, IN. NICTD supports continued coordination with South Bend and St. Joseph County officials in planning and development of the South Shore Line service area into downtown South Bend. NICTD is open to working with the City and County officials in the realization of a downtown station. NICTD will assist with pursuing federal funding for the various phases of the project planning, engineering, and construction. Local sources will need to be sorted out between the City and County for the matching requirements of any federal grants.



SOUTH SHORE LINE - AIRPORT REALIGNMENT

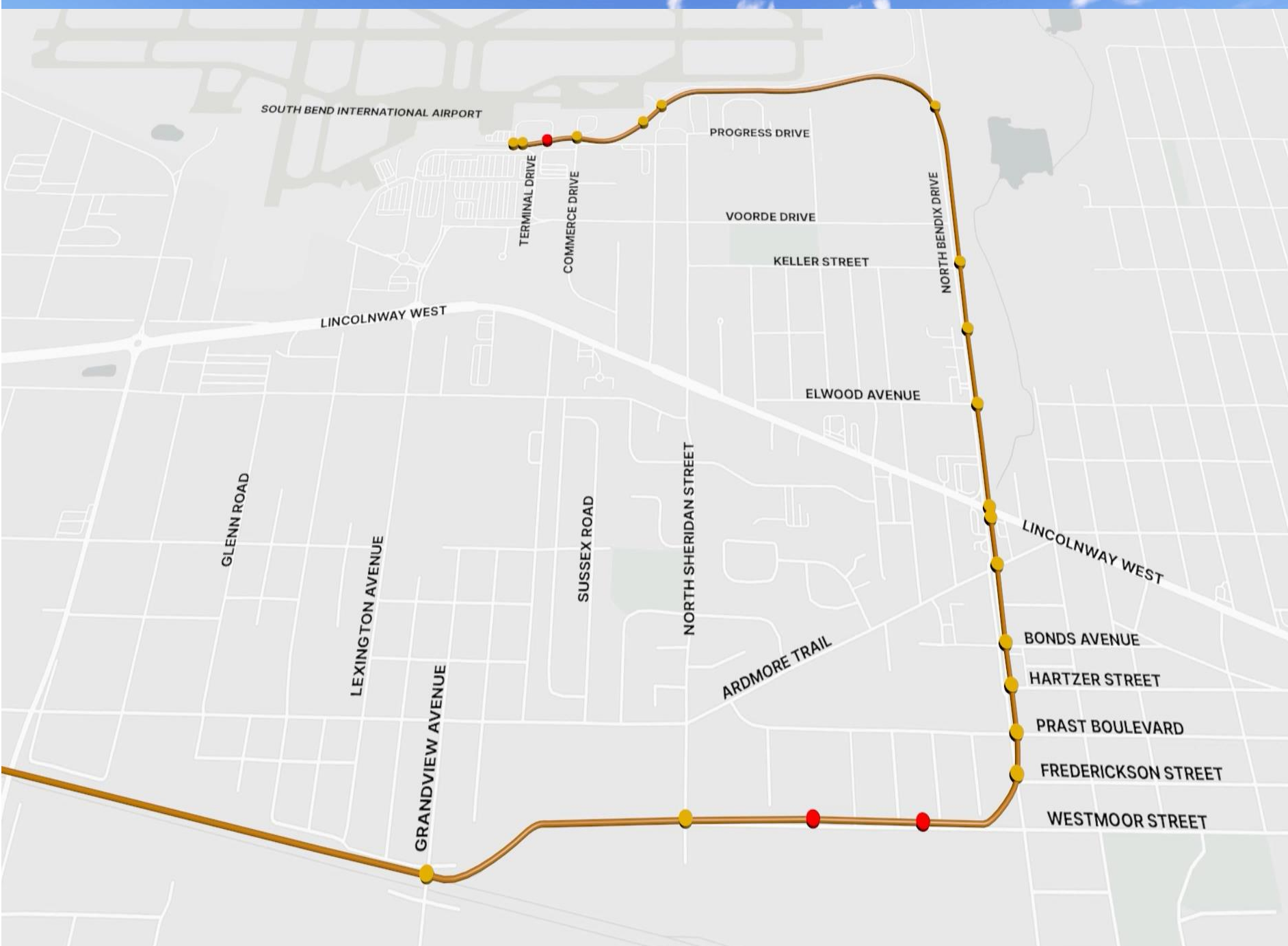






↑ Downtown
South Bend 4.5m

← Airport 1m



SOUTH BEND INTERNATIONAL AIRPORT

PROGRESS DRIVE

VOORDE DRIVE

KELLER STREET

NORTH BENDIX DRIVE

LINCOLNWAY WEST

ELWOOD AVENUE

GLENN ROAD

SUSSEX ROAD

NORTH SHERIDAN STREET

LINCOLNWAY WEST

LEXINGTON AVENUE

ARDMORE TRAIL

BONDS AVENUE

HARTZER STREET

PRAST BOULEVARD

FREDERICKSON STREET

GRANDVIEW AVENUE

WESTMOOR STREET

**NICTD 20-YEAR STRATEGIC PLAN
PASSED 2014
PRINCIPAL ELEMENTS**

**DOUBLE TRACK
WEST LAKE CORRIDOR
METRA CAPACITY IMPROVEMENT
SOUTH BEND AIRPORT**

**ALL COMPLETE, NEAR COMPLETE OR IN
PROGRESS**

UPDATE TO STRATEGIC PLAN

**NICTD BOARD AUTHORIZED STAFF TO UPDATE
THE NEXT 20 YEARS OF THE STRATEGIC PLAN
AECOMM HIRED TO ASSIST NICTD IN
GATHERING STAKEHOLDER INPUT AND
BRINGING DRAFT PLAN UPDATE TO BOARD
LATER IN 2025**

- POSSIBLE PROJECTS FOR INCLUSION
- ...West Lake Phase 2- Lowell, St. John and Cedar Lake
- ...New Service to Valparaiso
- ...New Service to LaPorte
- ...Extend South Shore Line to Downtown SB from SBN
- ...New Station in New Carlisle- GM/Samsung, Amazon
- ...New Gary Station
- ...Bi-Directional Signaling on MED- 79 mph...90 mph?
- ...New Rolling Stock: Battery/Electric?
- ...Extend Double Track from LaFayette Street to past Carroll Ave. in MC
- ...Other projects???

- **“MAKE NO LITTLE PLANS”**

DANIEL BURNHAM