



Reducing Food Waste in Retail

Erik Petrovskis, PhD PE

Meijer

November 13, 2024

Where We Began

Founded in 1934 by Hendrik Meijer

Third Generation Family Run

Began as a Grocer

Created Supercenter Concept in 1962



Company Overview

Team Members: **70,000+**

Number of Stores: **268**

Meijer Express: **235**

Distribution Facilities: **6**

Manufacturing Facilities: **6**

New Stores in 2024: **5***

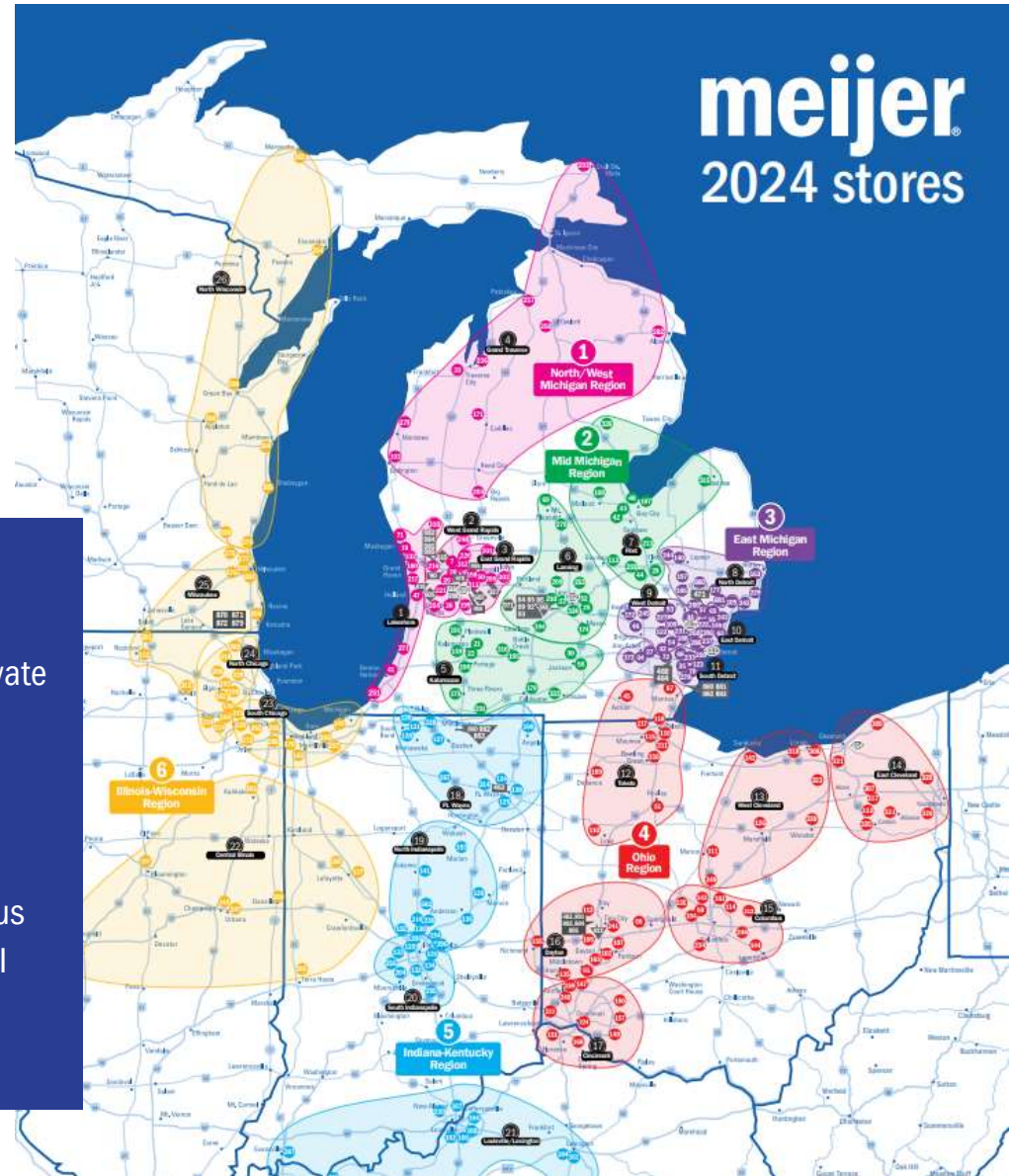
*Store count includes Fairfax Market, opened Jan FY23



16th Largest Private Company in U.S.
(As ranked by Forbes)



Corporate Campus
Grand Rapids, MI





Purpose-Based Sustainability

Enriching Lives in the Communities We Serve



CARBON EMISSIONS

Reduce Scope 1 and 2 Emissions 50% by 2025 (2018 Baseline)



FOOD WASTE

Divert 50% of Food Waste from Landfill by 2030



CIRCULAR ECONOMY

Divert 70% of Waste from Landfill by 2025

Own Brand Packaging Sustainability Goals



GREAT LAKES STEWARDSHIP

Activate Coastal Cleanup Work

Green Infrastructure Evaluations

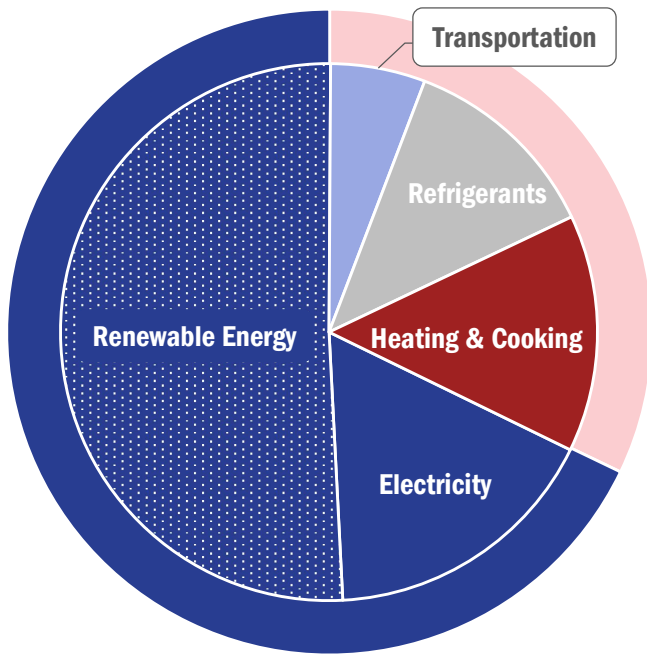
Carbon Emissions

A photograph of a solar farm with rows of blue solar panels in the foreground and several white wind turbines in the background under a blue sky with scattered clouds.

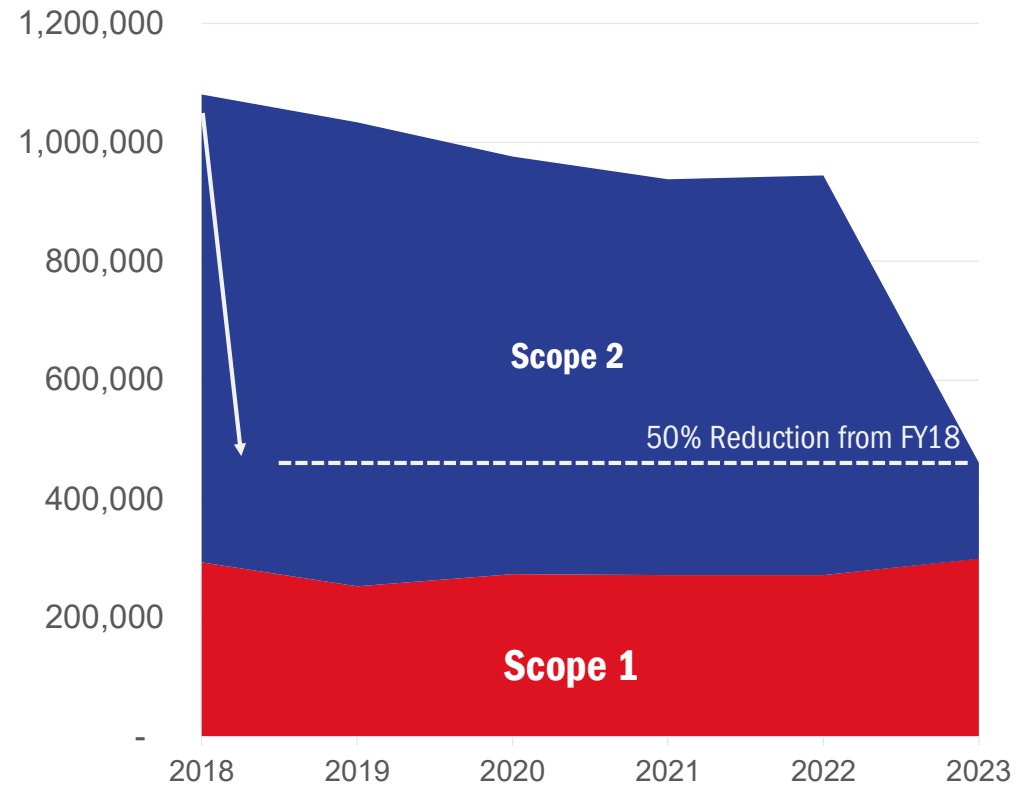
Meijer's Carbon Footprint

FY2023 Scope 1 and 2 Emissions

FY2023 Operational Emissions – Renewable Energy Reductions



FY 2018 – 2023 Carbon Emissions by Scope (MtCO2e)



50% Carbon Reduction by 2025

Energy Efficiencies and Renewable Energy

Meijer to Transition All Stores to LED Lighting by 2021



July 17, 2018

Contact: Jennifer Rook, 616-791-2794, jennifer.rook@meijer.com

GRAND RAPIDS, Mich. – As part of its ongoing effort to increase its sustainability initiatives, Meijer announced today that it plans to transition the interior lighting of its retail locations to all LED by 2021. The transition will affect all Meijer stores across the retailer's six-state footprint. Meijer expects the change will reduce its lighting electrical use by as much as 50 percent annually.



Pisgah Ridge Solar Energy



Lacy Creek Wind Energy



A large pile of food waste, including vegetable scraps, peels, and stems. The waste is a mix of colors, including green, orange, yellow, and purple. Visible items include carrot peels, broccoli florets, green beans, and various vegetable scraps. The text "Food Waste" is overlaid in the center in a bold, black font.

Food Waste

meijer

Our Goal:

50% Food Waste Diversion by 2030

**Community
Food Donation**



**FEEDING
AMERICA**
11.0M lbs.

**Near-Expiry
Markdowns**



Flashfood®
6.4M lbs.

**Compost +
Animal Feed**



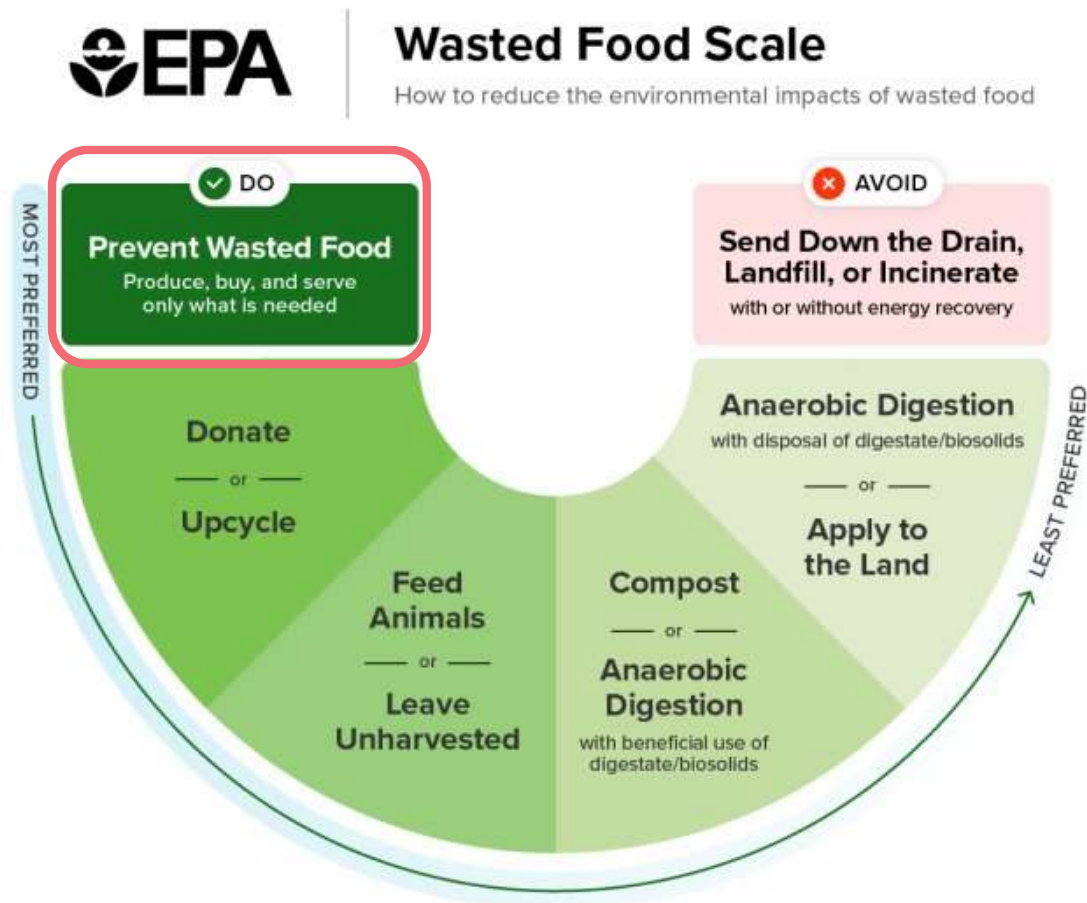
DENALI
15.1M lbs.



Prevent Wasted Food

Ordering

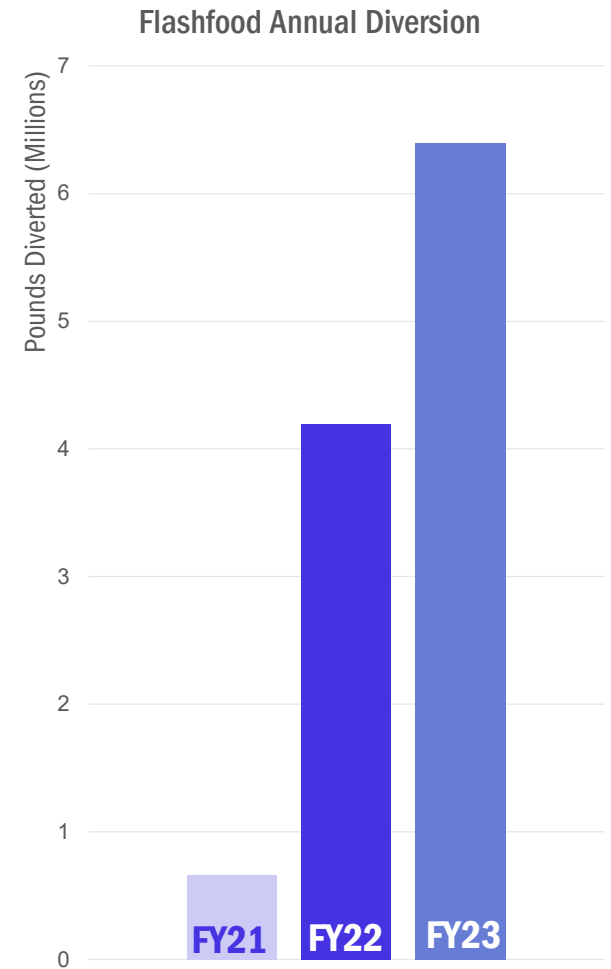
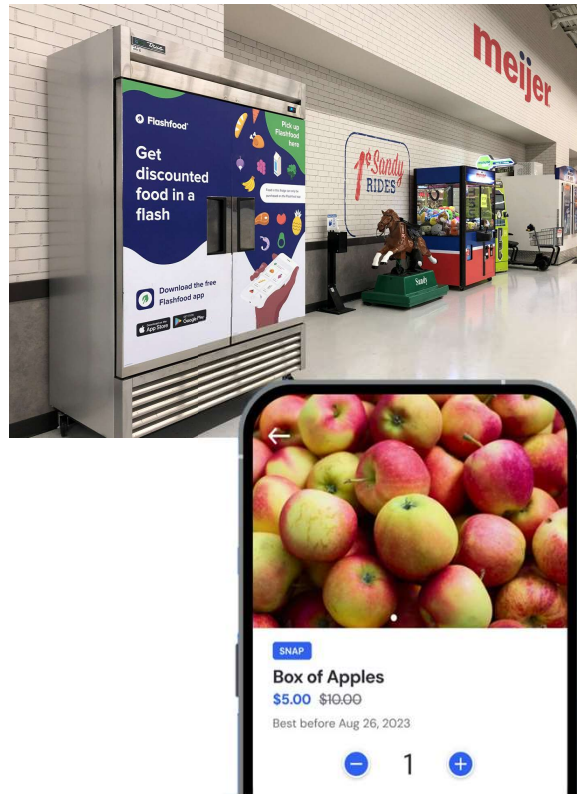
- Meijer utilizes a variety of data inputs to determine the appropriate order quantities for each product we sell.
- Accurate ordering helps reduce surplus product in our stores.
- A variety of food product sizes are available for customers to purchase the amount appropriate for their needs.



Prevent Wasted Food

Flashfood Partnership

- Our partnership with Flashfood enables markdowns of near-dated food ahead of its expiration
- Primarily fresh food items, like produce, meat, seafood, dairy, bakery, and deli products.



Donate or Upcycle

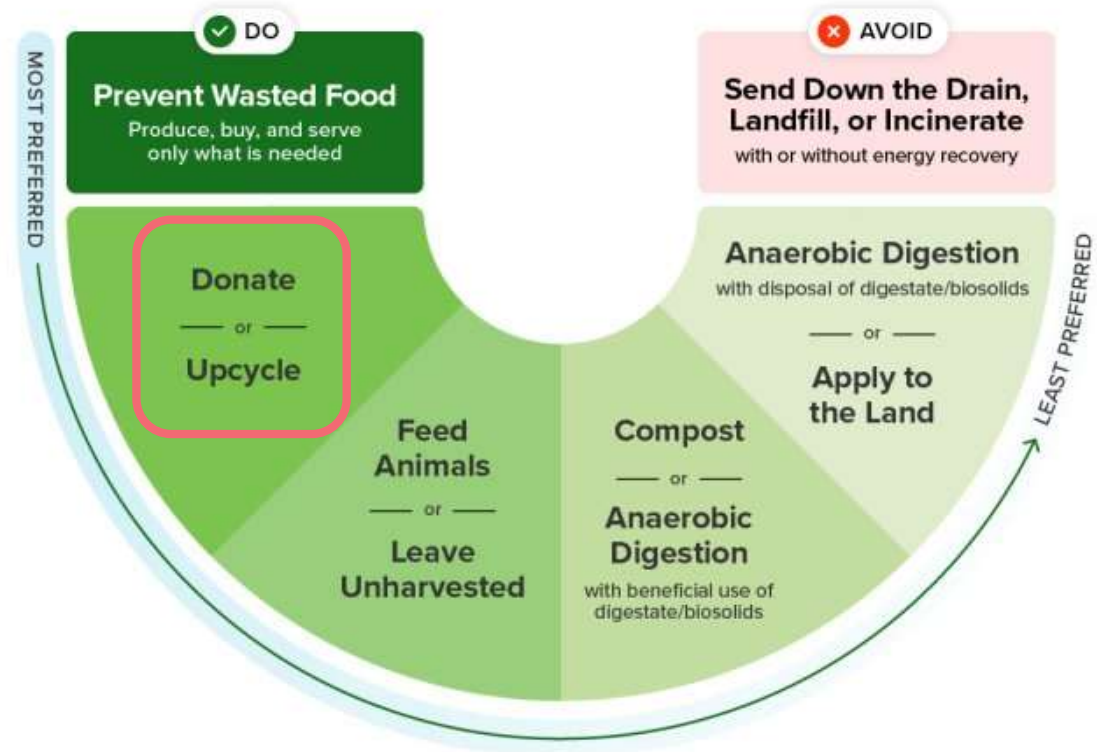
Feeding America

- We partner with Feeding America to pair local food banks with each of our stores.
- Surplus product is set aside for pick up by the food bank partners.



Wasted Food Scale

How to reduce the environmental impacts of wasted food



Feed Animals, Compost, and Anaerobic Digestion

Denali

- Each Meijer store has an outlet for food that cannot be sold or donated, including spoiled or damaged produce and food scraps.
- We partner with a vendor that transports this material to facilities where our waste is used to produce animal feed, compost, or undergo anaerobic digestion.



Feed Animals, Compost, and Anaerobic Digestion

Manufacturing

Middlebury Central Kitchen



Holland and Tipp City Dairies



Lansing Fresh Assembly





Q&A

Thank You

